



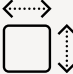


THE ODESSA

WITH LOFT (2636 SQFT)



SPECIFICATIONS

-  Garage Spaces: 2
-  Bedroom Count: 2 +2
-  Bathroom Count: 2 +2
-  Number of Floors: 2
-  Square Footage: 2636



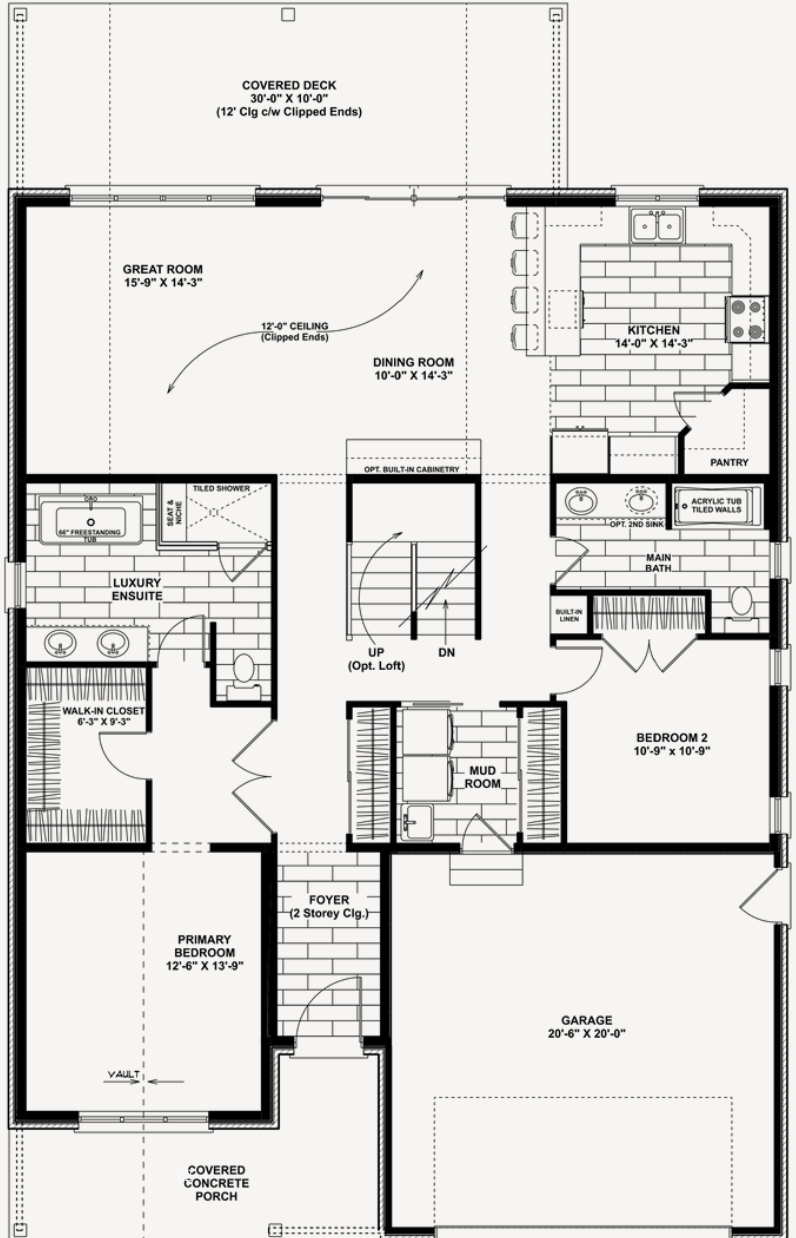
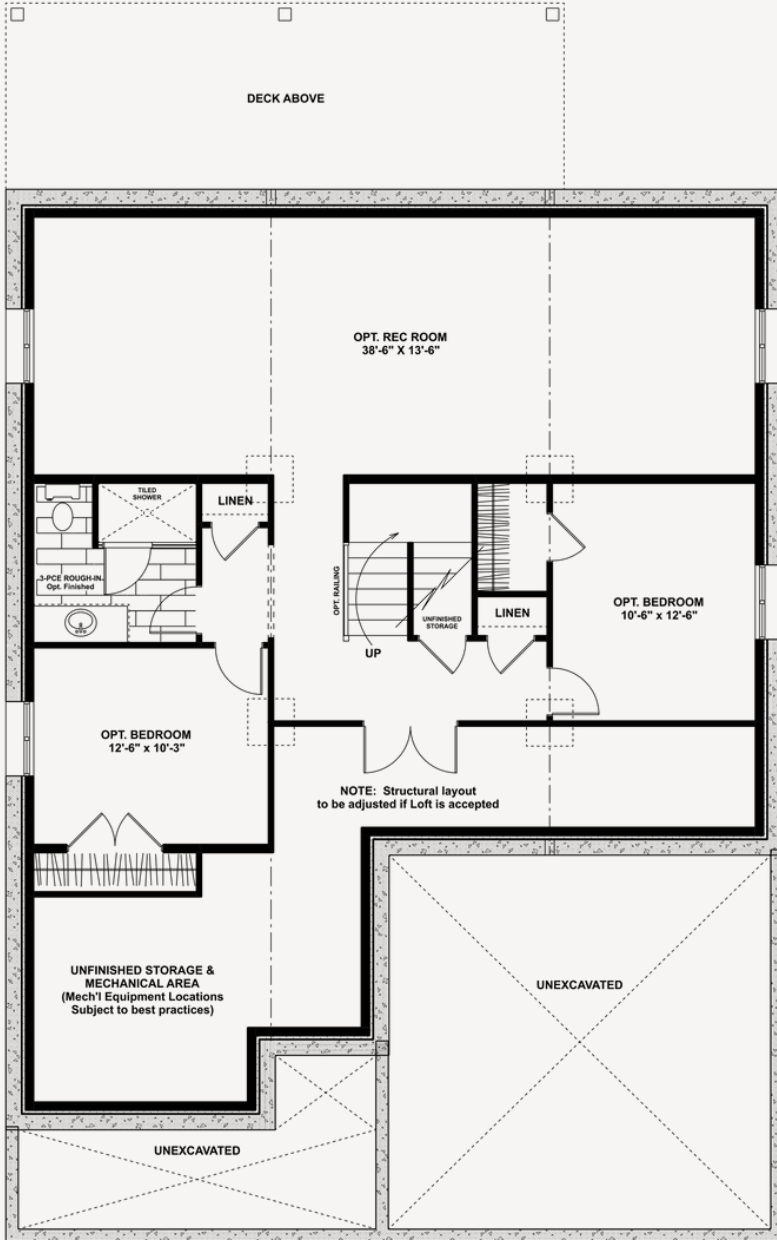
FEATURES

- Vaulted ceiling on front porch
- Clipped ceiling in loft
- Vaulted / raised ceiling in great room
 - min. ht. 9'-0"
 - max. ht. 12'-0"
- 3/4" Engineered hardwood standard in great room, dining room & hallway (foyer ceramic)



MAIN FLOOR

THE ODESSA



BASEMENT

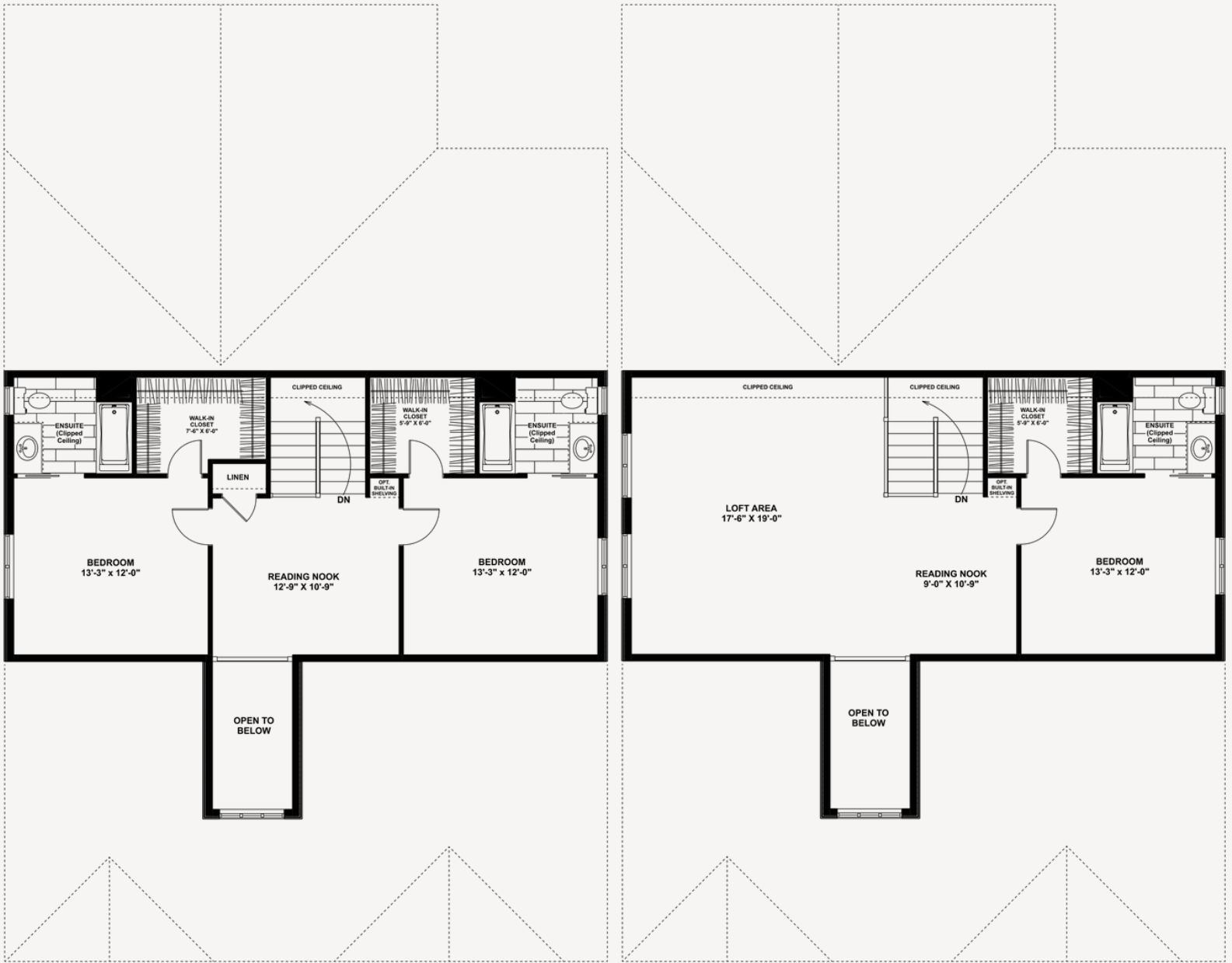
- Square Footage: 1131
- Bedrooms: +2
- Bathrooms: +1

MAIN FLOOR

- Square Footage: 1783
- Bedrooms: 2
- Bathrooms: 2

OPTIONAL LOFT

THE ODESSA



LOFT (OPTION I)

- Square Footage: 853
- Bedrooms: +2
- Bathrooms: +2

LOFT (OPTION II)

- Square Footage: 853
- Bedrooms: +1
- Bathrooms: +1