






# THE CHERRYWOOD

WITH LOFT (2704 SQFT)



## SPECIFICATIONS

-  Garage Spaces: 2
-  Bedroom Count: 2 +1
-  Bathroom Count: 2 +1
-  Number of Floors: 1
-  Square Footage: 2704



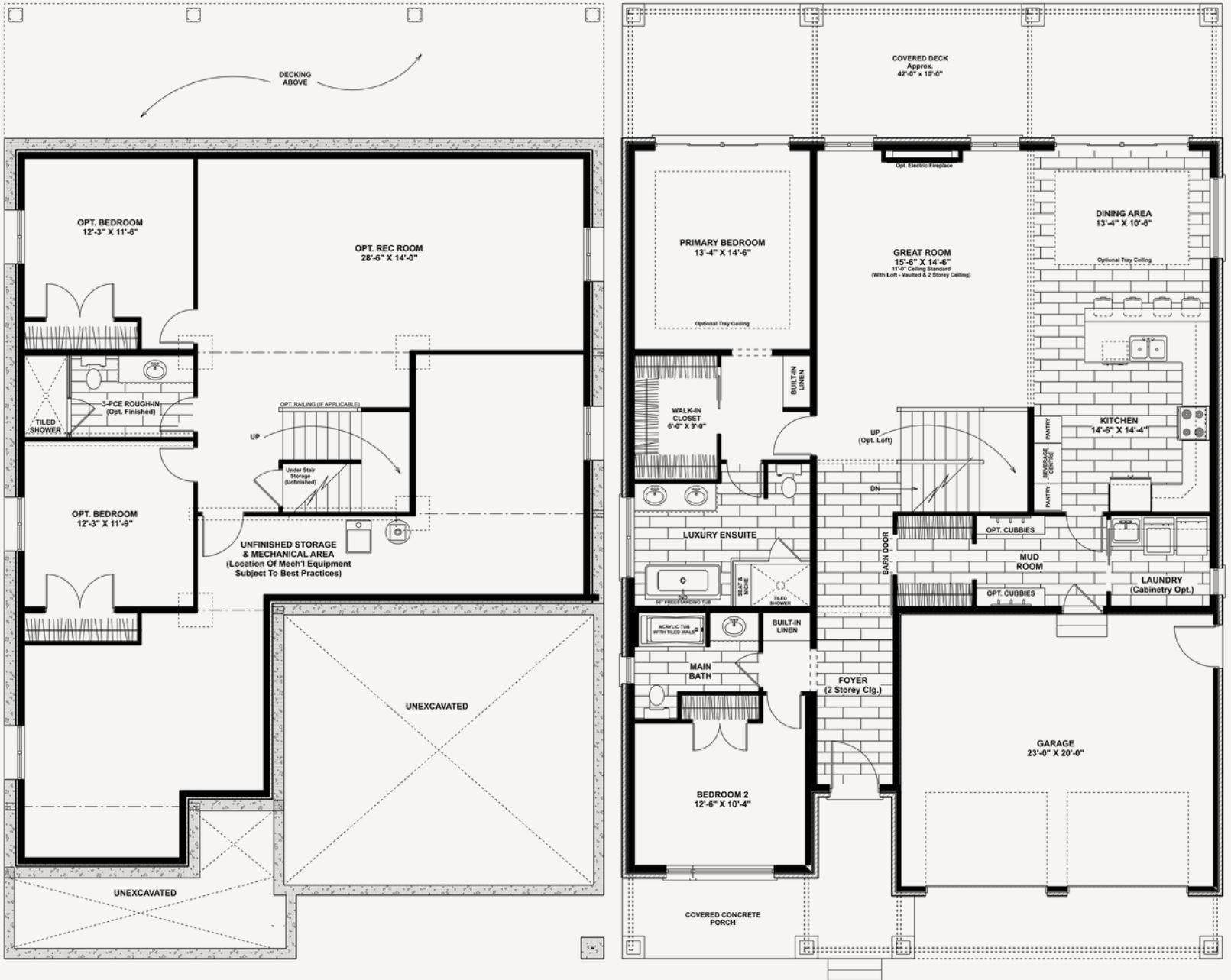
## FEATURES

- Brick on sides & rear (shake style siding in rear gable, horizontal siding in side gables)
- Cabinetry pantry / beverage centre style cabinet in kitchen
- Stairs to 2nd floor solid oak & stained. Stairs to basement carpet.



# FLOOR PLAN

## THE CHERRYWOOD



### BASEMENT

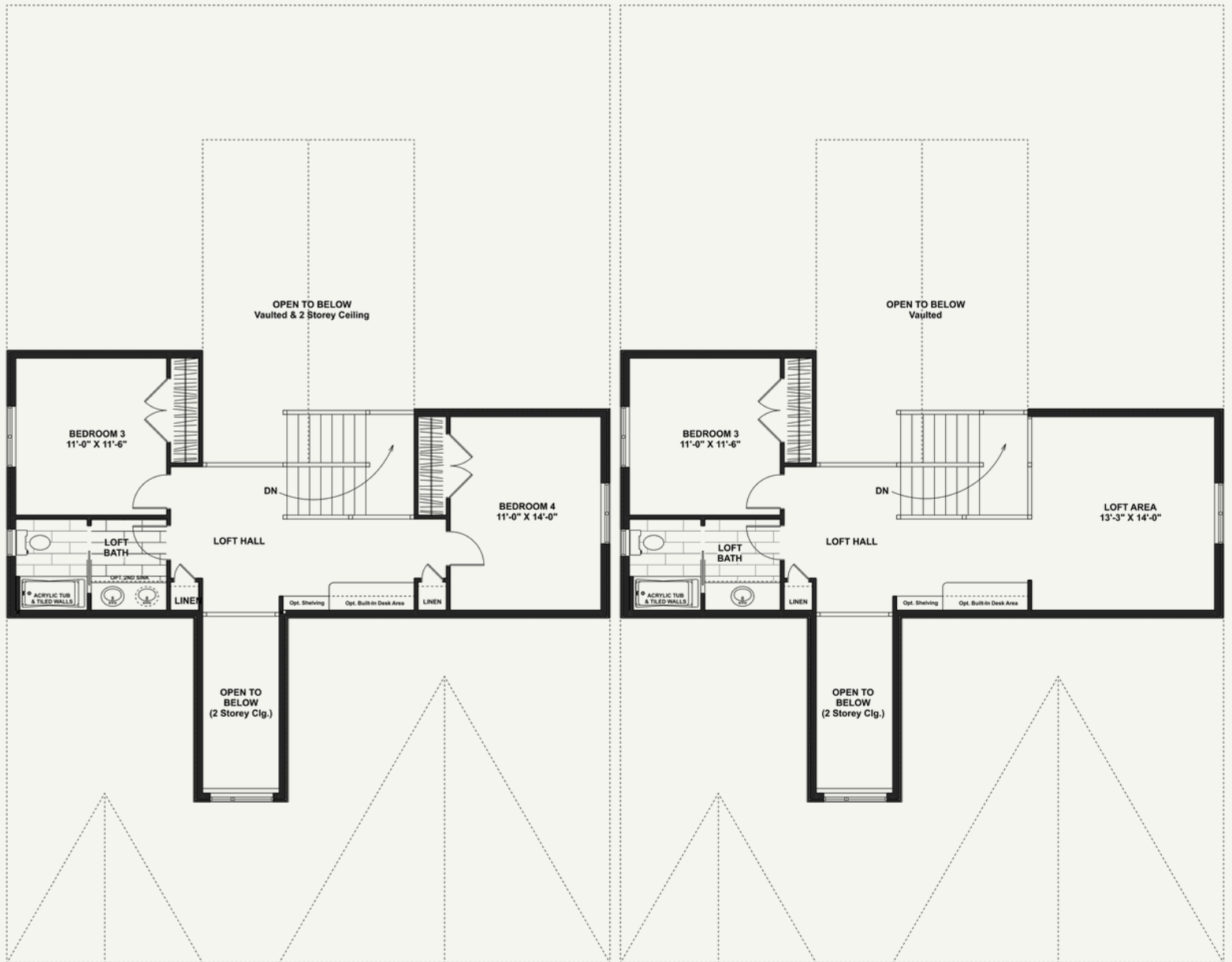
- Square Footage: 1682
- Bedrooms: 2
- Bathrooms: 1

### MAIN FLOOR

- Square Footage: 1966
- Bedrooms: 2
- Bathrooms: 2

# OPTIONAL LOFT

## THE CHERRYWOOD



### LOFT (OPTION I)

- Square Footage: 734
- Bedrooms: 2
- Bathrooms: 1

### LOFT (OPTION II)

- Square Footage: 734
- Bedrooms: 1
- Bathrooms: 1