



WRIGHTHAVEN
— HOMES —

CONFIDENTLY WORK WITH AN
AWARD WINNING BUILDER

WWW.WRIGHTHAVENHOMES.COM

FEATURES & FINANCING INCENTIVES

Energy Star Certified Homes

All 10 Appliances Included!!

Luxury Plank Vinyl throughout

Stone, Brick ,Premium Siding Exteriors

Separate Electrical Panel for rental suite

Double Pane Windows

Separate Front door entry for owner and tenant

Oversized Driveways



FINANCING INCENTIVES

1. **Flexible Financing Rates** (requires bank approval)
2. **Flexible Move In Dates + Move in Ready**
3. **Staggered Deposit Structure**
4. **First Come, First Serve, Renter Wait list**
5. **Immediate Occupancy for Renters Upon Closing Date** (owner responsible for individual rental agreements)

BLOCK 26 TOWNHOMES

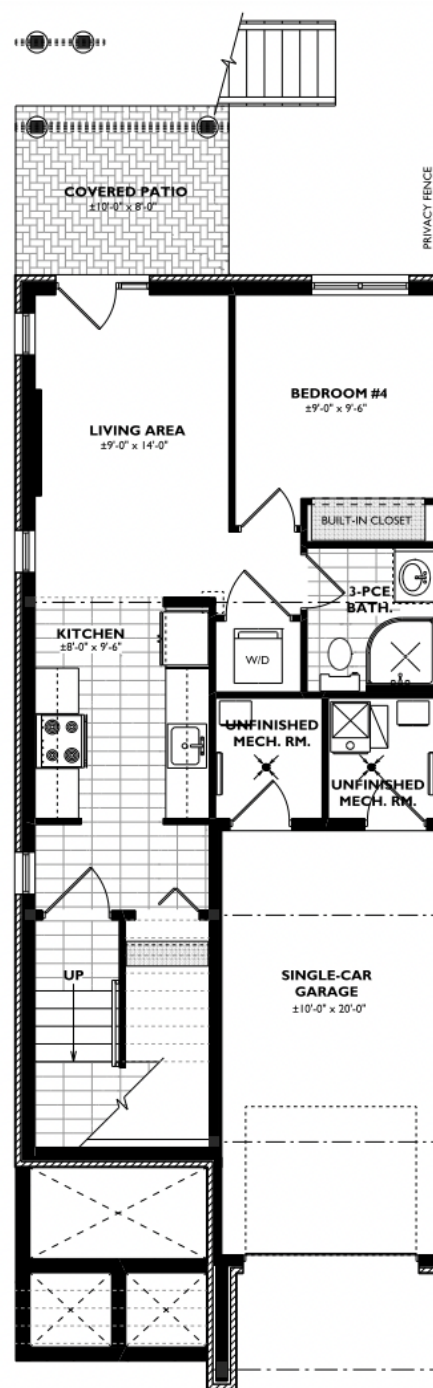
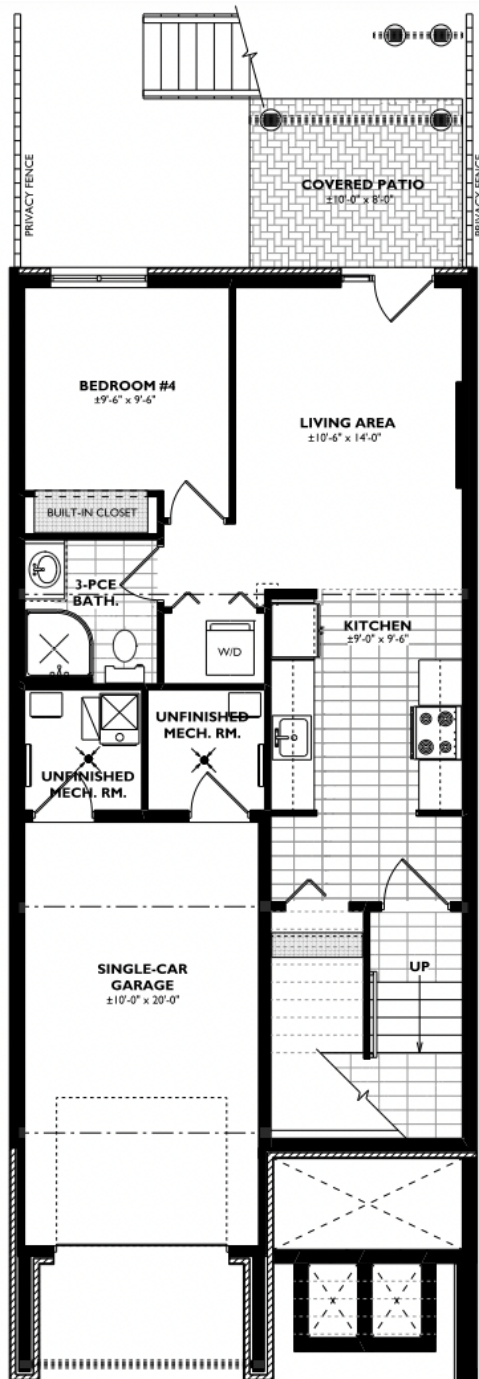
SPECIFICATIONS

Description	Principle Main Suite	Apartment Tenant Suite
Bedrooms	3	1
Bathrooms	2.5	1
Garage	1	Shared Visitor Parking
Points of Entry	1	2
Outdoor Feature	2 Deck Areas (Off Dining Room + Great Room)	Covered Porch (Off Rear Entrance)
Kitchen	Soft Close Cabinets, Granite Countertops, Preparation Station	
Flooring	Tile & Luxury Vinyl Plank	

BLOCK 26 TOWNHOMES

INTERIOR
BASEMENT APARTMENT
555 SQ. FT

EXTERIOR
BASEMENT APARTMENT
529 SQ. FT



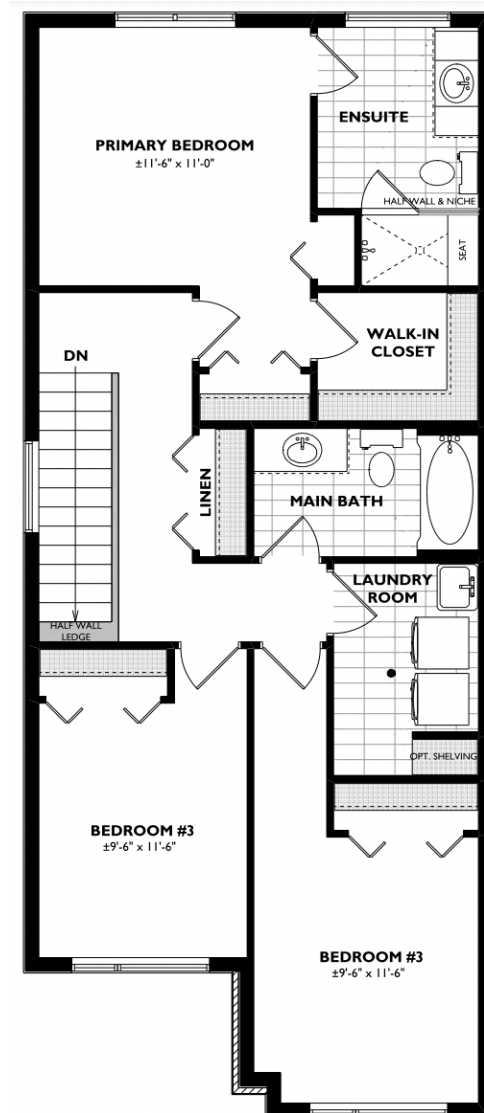
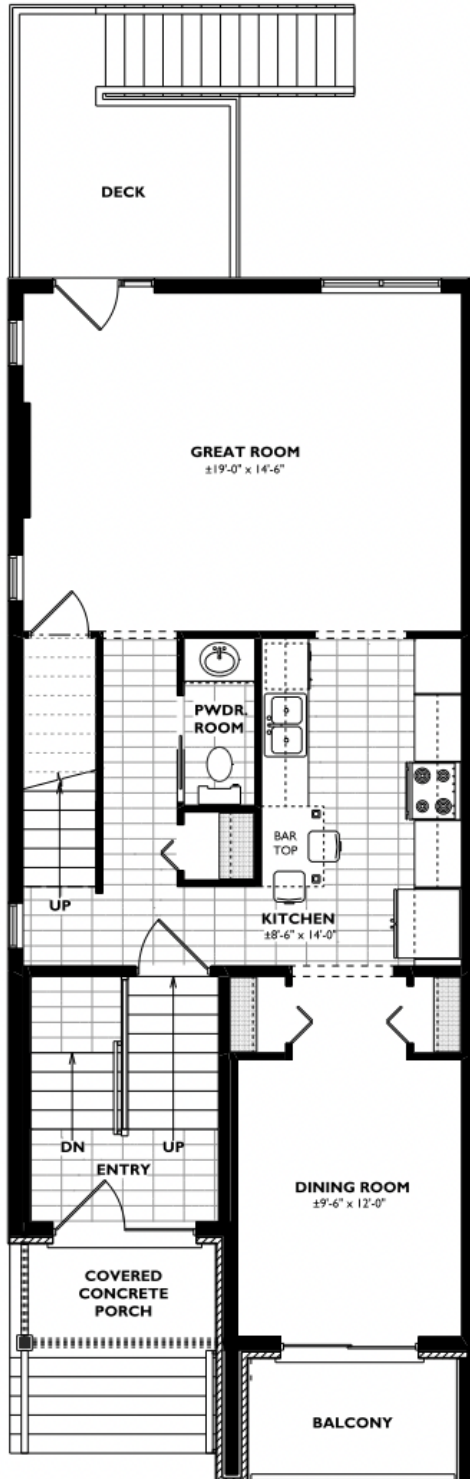
BLOCK 26 FLOORPLAN

INTERIOR UNIT
FLOORPLAN 1,824 SQ FT



BLOCK 26 FLOORPLAN

EXTERIOR UNIT
FLOORPLAN 1,721 SQ FT



BLOCK 26 FLOORPLAN

CONDOMINIUM FEES INCLUDE GROUND
MAINTENANCE AND SNOW REMOVAL



CREEK BANK MEADOWS - BLOCK 26

BRIDGE CRESCENT, TOWN OF PALMERSTON

CLIENT NOTES

Block 26 Bridge Crescent

- Townhome units are Common Element Condominiums
- All homes are energy star labelled and certified
- Clients will receive a worry free full year of after sale service from WrightHaven Homes and a 2 year plumbing, and mechanical coverage
- Home is registered under the Tarion Home Warranty Program
- Clients will be purchasing units as designed - No Changes to floorplan or substitutions permitted

NOTE #1: Price Includes The Following:

- H.S.T. Tax & Applicable Rebates
- All Municipal Service Hookups
- All building permits and development charges & Education Levies
- Initial Reserve Fund contribution of \$5,000 will be made by the builder
- First Year Common Element Fees of \$150/month will be billed to principle owner

