

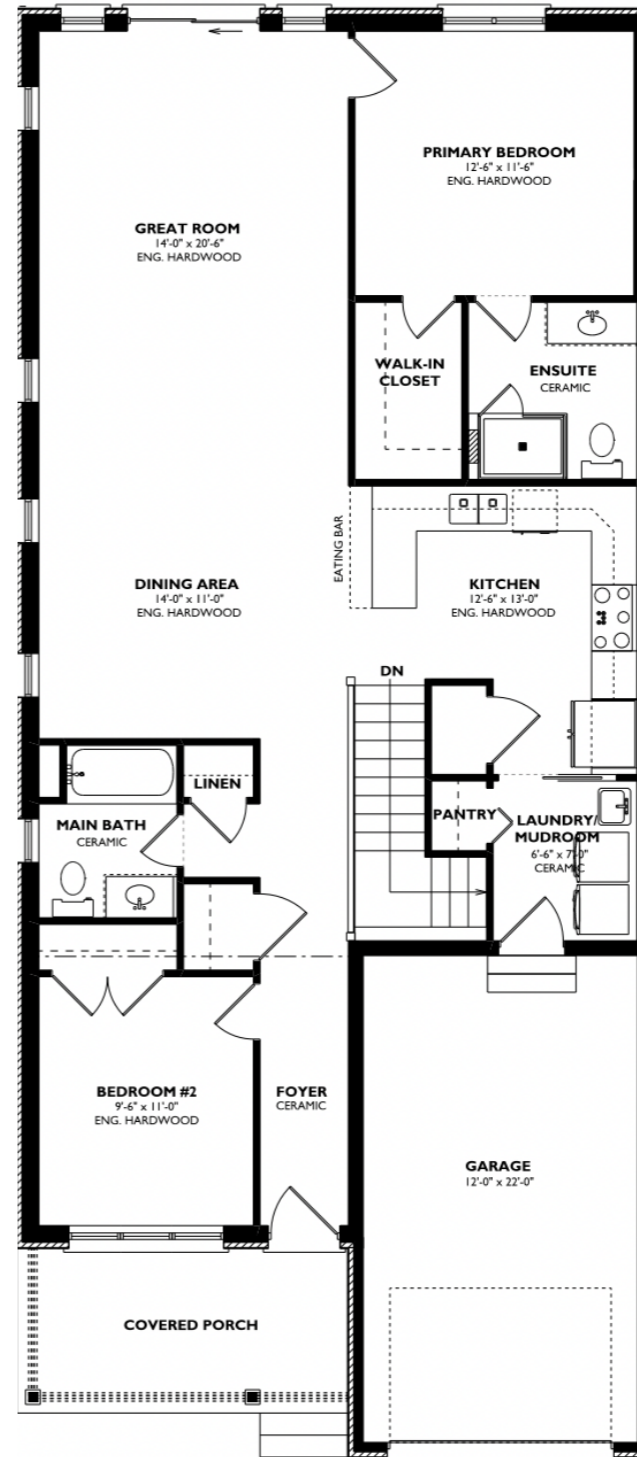
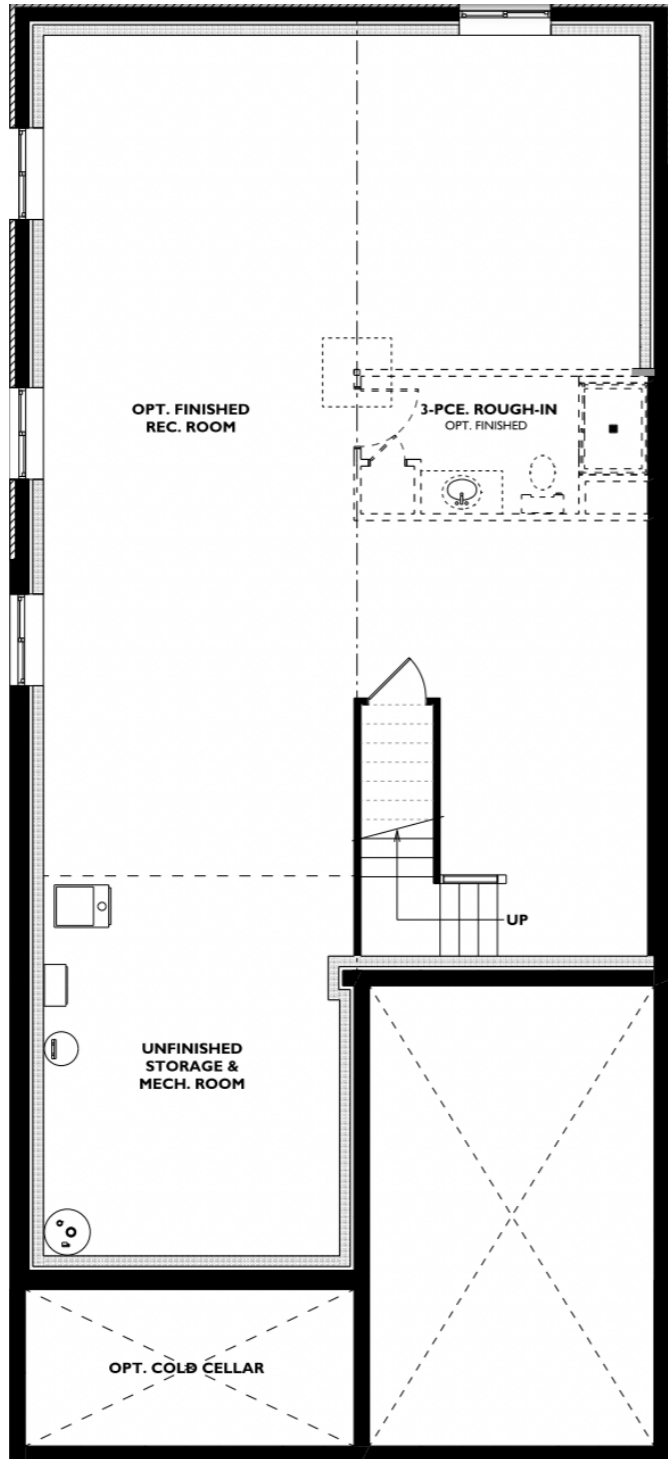


BLOCK 83

UNITS 1 & 6

1438 SQ FT





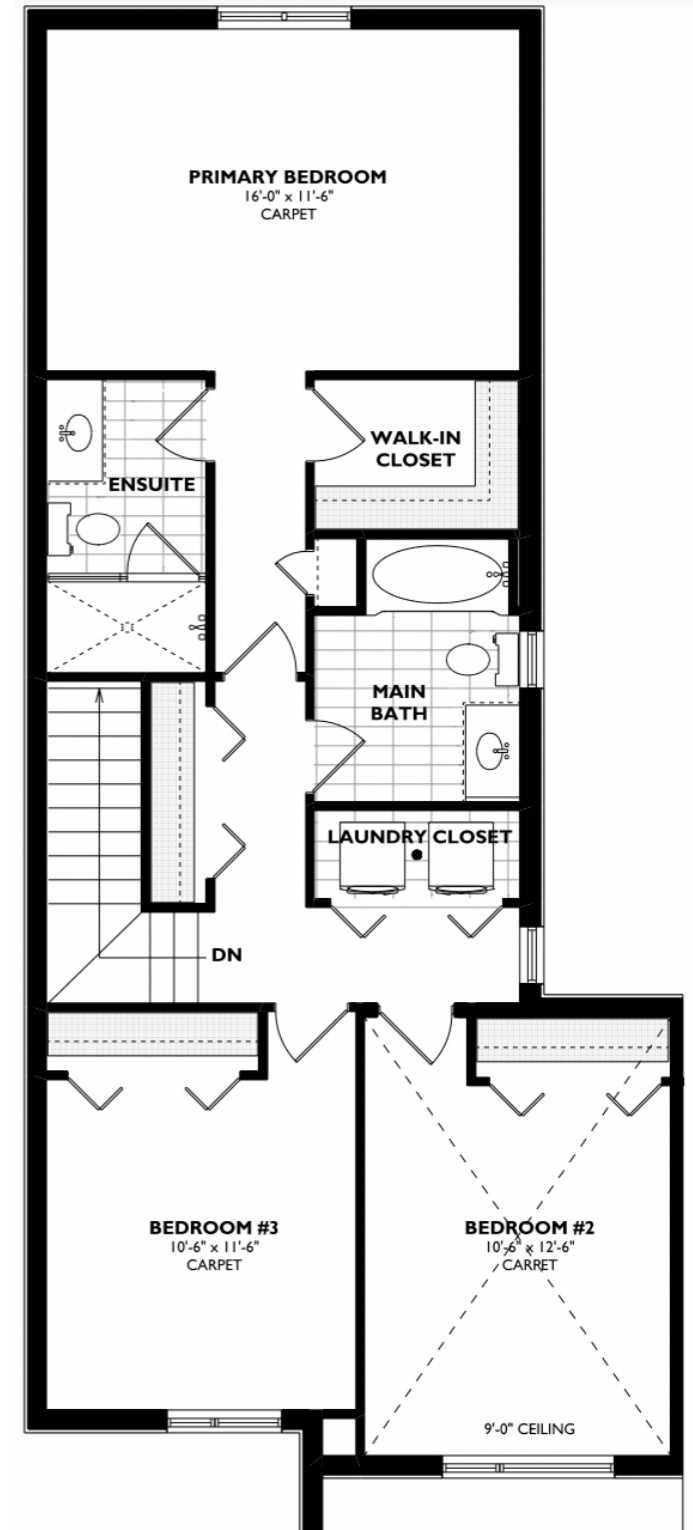
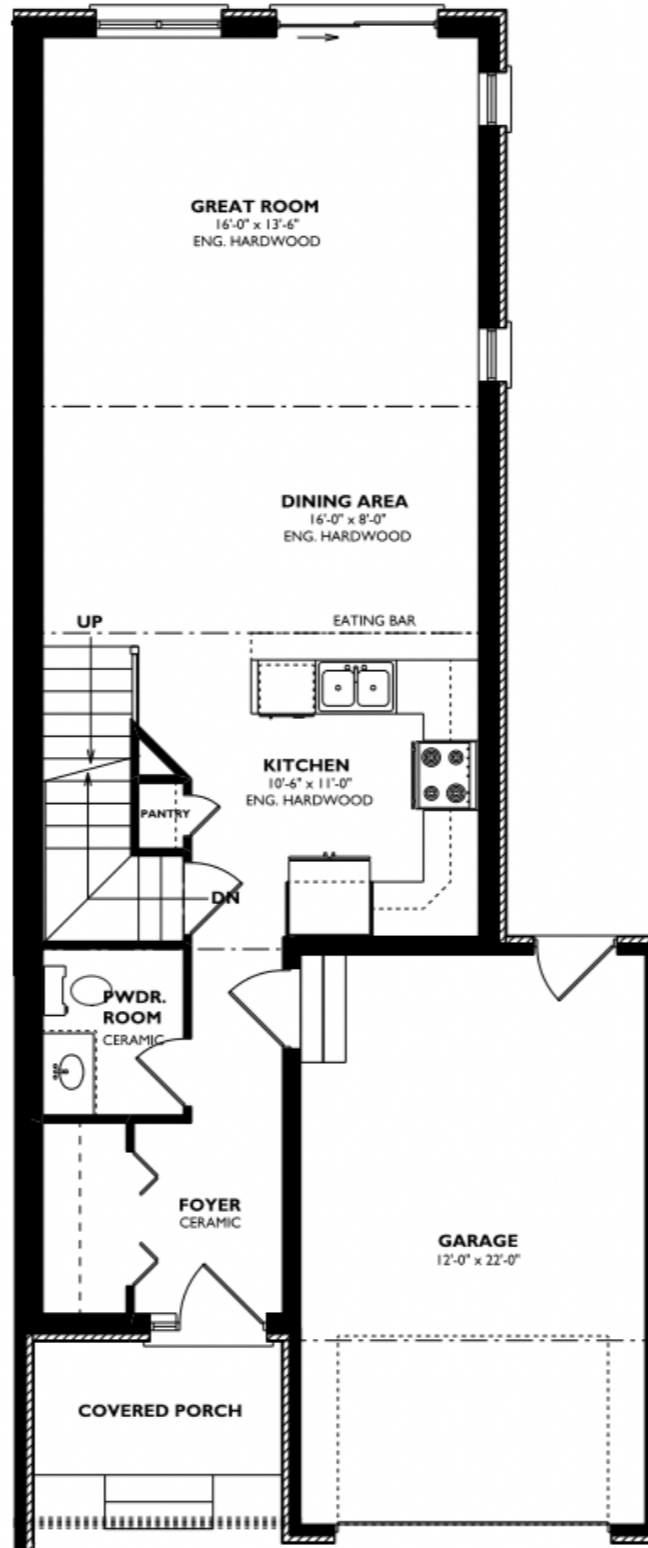
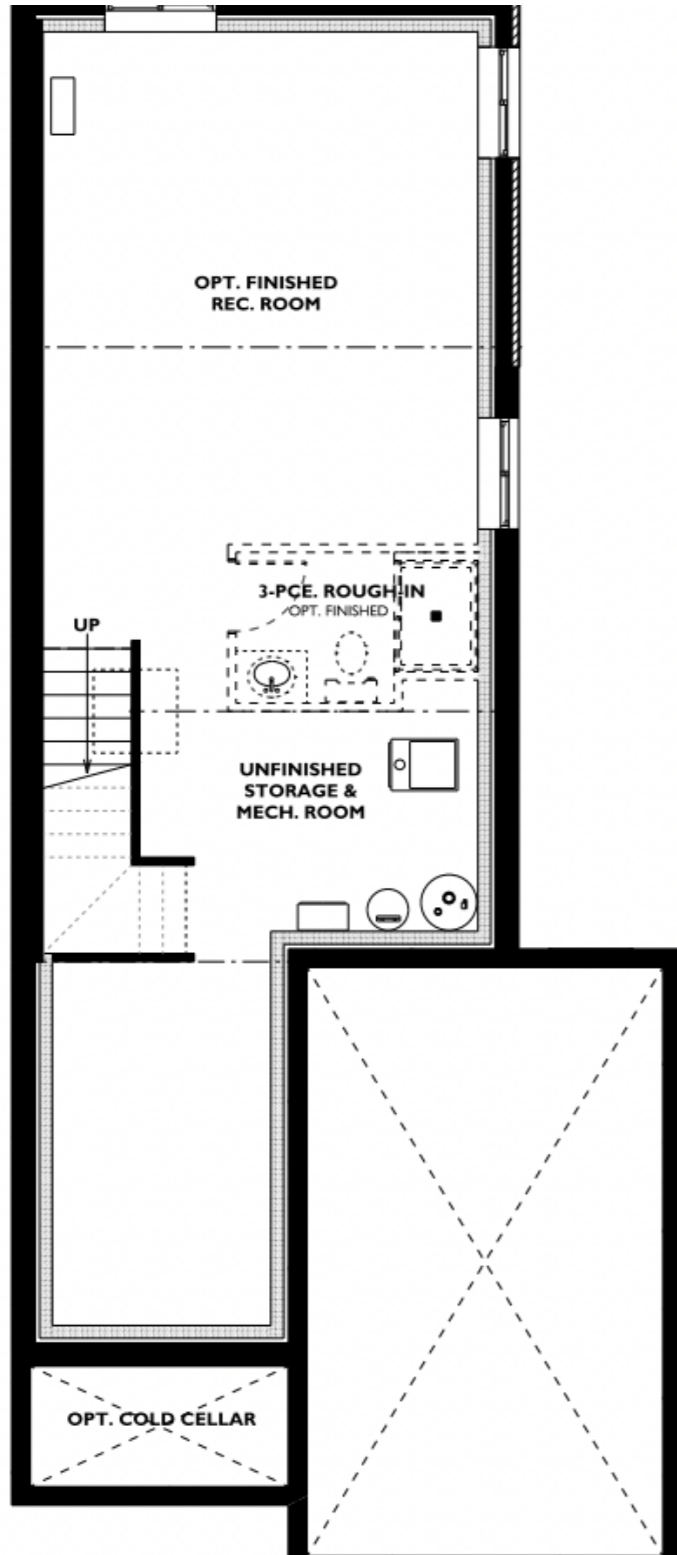


BLOCK 83

UNITS 2-5

1718 SQ FT





BLOCK 83 - UNITS 1 & 6

FEATURE & FINISH HIGHLIGHTS

- Freehold Townhomes

General Build Features

- 9'-0" Main Floor Ceilings
- 8'-0" 2nd Floor Ceilings
- 8'-0" Basement Foundation

Landscaping - Predetermined features

including:

- Interlocking stone walkway from front porch to driveway
- Widened driving using interlocking stone for side by side parking
- Asphalt finished driveway
- Fully sodded lot c/w tree where applicable
- Living privacy fence between units (Mature Cedars)

Exterior - Preselected finishes including:

- Premium Wood & Aluminum based Siding
- Aluminum soffit, fascia & troughs
- Cement stone & clay brick
- Colour exterior / white interior on all windows
- Asphalt shingles
- Decorative front door glass inserts

Interior - Customer selected finishes:

- Engineered hardwood in Great Room - 5" wide plank selections
- Up to 12x24 "Flair" series tile in all tiled floor and wall locations
- Level 1 Carpet c/w upgraded "BEST" underpad throughout balance
- Solid oak stairs, stained c/w oak railings & plain black metal spindles where applicable
- 3-1/2" casing & 5-1/4" baseboards in a "Modern Step" profile
- 2 panel square top doors throughout home (80" height) c/w nickel or black hardware
- Cut glass mirrors throughout all bathrooms
- Wire rack shelving in all closets

Cabinetry - Customer selected finishes:

- Level 1 solid surface countertop selections throughout
- Up to 36" high upper cabinets in kitchen
- Selection of painted or stained finishes in a variety of doorstyles

- Provisions for over the range hood installation (customer to supply appliance)

Plumbing - standard selections:

(Upgrades available)

- Modern style bathroom faucet package (chrome finish)
- Ensuite shower provided with magnetic hand shower feature (chrome finish)
- Pulldown kitchen faucet with spray in choice of Chrome, Stainless or Black finish
- Water line to fridge

Lighting & Electrical:

- Pot light package - 4 lights (predetermined location)
- Wall mount tv provision in great room
- CAT 6 wiring throughout home (predetermined locations) c/w structured wiring box in basement
- Simple security rough-in
- Central vac rough-in
- Customer selected lighting throughout finished locations (basic allowance provisions)
- Electric fireplace in great room c/w drywalled finish (predetermined unit, upgrades available)
- Motion sensor lights in all reach-in closets

Miscellaneous Features:

- Sound suppression provisions in main bathroom

High Performance Energy Star Package:

- 2" (2lb) underslab foam spray insulation (basement) Approx. R10
- 2" (2lb) foam spray insulation on all exterior foundation walls, 2x4 fully strapped with R20 Rockwool batt insulation. Approx. R30
- 2lb foam insulation spray in garage ceilings (exposed upper floors) plus batt insulation
- 200 amp electrical panel
- High efficiency air source heat pump integrated with air handler and ductwork system providing multi zoned heating and cooling.
- Sonopan sound insulation on interior adjacent wall assemblies (townhomes)
- Premium mechanical provisions

BLOCK 83 - UNITS 2-5

FEATURE & FINISH HIGHLIGHTS

- Freehold Townhomes

General Build Features

- 9'-0" Main Floor Ceilings
- 8'-0" 2nd Floor Ceilings
- 8'-0" Basement Foundation

Landscaping - Predetermined features

including:

- Interlocking stone walkway from front porch to driveway
- Widened driving using interlocking stone for side by side parking
- Asphalt finished driveway
- Fully sodded lot c/w tree where applicable
- Living privacy fence between units (Mature Cedars)

Exterior - Preselected finishes including:

- Premium Wood & Aluminum based Siding
- Aluminum soffit, fascia & troughs
- Cement stone & clay brick
- Colour exterior / white interior on all windows
- Asphalt shingles
- Decorative front door glass inserts

Interior - Customer selected finishes:

- Engineered hardwood in Great Room - 5" wide plank selections
- Up to 12x24 "Flair" series tile in all tiled floor and wall locations
- Level 1 Carpet c/w upgraded "BEST" underpad throughout balance
- Solid oak stairs up to 2nd floor stained c/w oak railings & plain black metal spindles where applicable
- Stairs to basement unfinished carpet grade unless purchased otherwise (2 storey only)
- 3-1/2" casing & 5-1/4" baseboards in a "Modern Step" profile
- 2 panel square top doors throughout home (80" height) c/w nickel or black hardware
- Cut glass mirrors throughout all bathrooms
- Wire rack shelving in all closets

Cabinetry - Customer selected finishes:

- Level 1 solid surface countertop selections throughout
- Up to 36" high upper cabinets in kitchen
- Selection of painted or stained finishes in a variety of doorstyles

- Provisions for over the range hood installation (customer to supply appliance)

Plumbing - standard selections:

(Upgrades available)

- Modern style bathroom faucet package (chrome finish)
- Ensuite shower provided with magnetic hand shower feature (chrome finish)
- Choice of Chrome or Matte Black faucet finish in powder room (2 storey only)
- Pulldown kitchen faucet with spray in choice of Chrome, Stainless or Black finish
- Water line to fridge

Lighting & Electrical:

- Pot light package - 4 lights (predetermined location)
- Wall mount tv provision in great room
- CAT 6 wiring throughout home (predetermined locations) c/w structured wiring box in basement
- Simple security rough-in
- Central vac rough-in
- Customer selected lighting throughout finished locations (basic allowance provisions)
- Electric fireplace in great room c/w drywalled finish (predetermined unit, upgrades available)
- Motion sensor lights in all reach-in closets

Miscellaneous Features:

- Sound suppression provisions in main floor powder room

High Performance Energy Star Package:

- 2" (2lb) underslab foam spray insulation (basement) Approx. R10
- 2" (2lb) foam spray insulation on all exterior foundation walls, 2x4 fully strapped with R20 Rockwool batt insulation. Approx. R30
- 2lb foam insulation spray in garage ceilings (exposed upper floors) plus batt insulation
- 200 amp electrical panel
- High efficiency air source heat pump integrated with air handler and ductwork system providing multi zoned heating and cooling.
- Sonopan sound insulation on interior adjacent wall assemblies (townhomes)
- Premium mechanical provisions